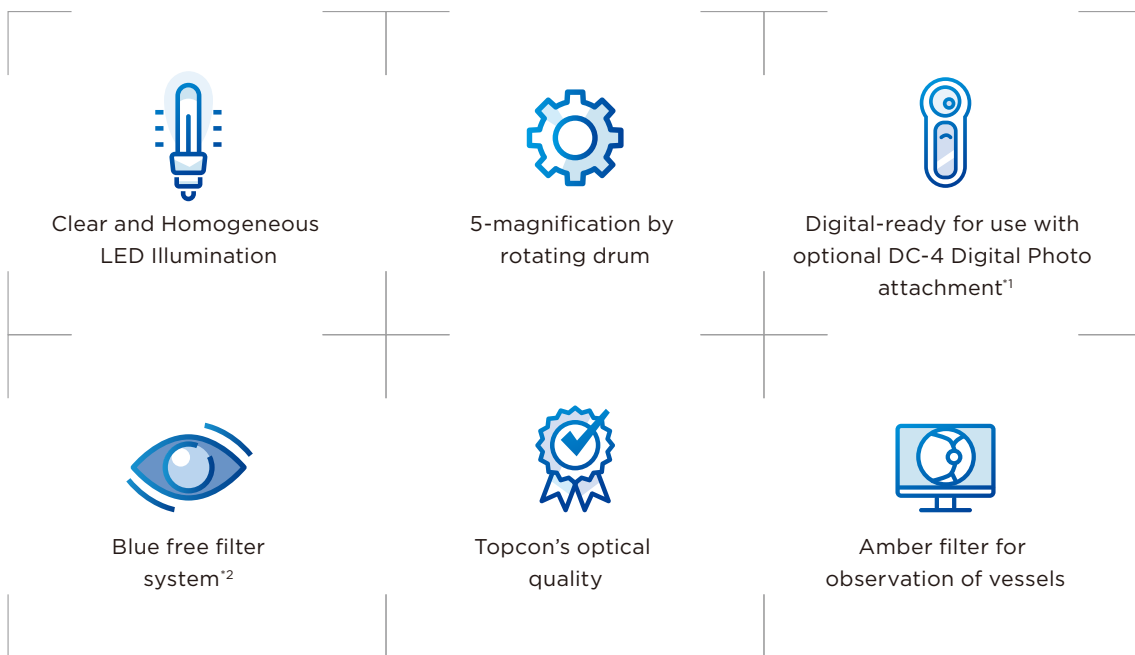


SL-D4 LED SLIT LAMP

COMPACT, LED ILLUMINATION AND EASY TO USE



*1 Optional accessory

*2 Blue Free Filter System stands for the combination of the optional accessory
YELLOW FILTER UNIT and the blue filter built-in SL-D4 (Type:LED)

Not for sale in the US.



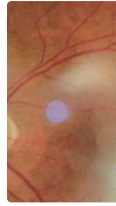


SL-D4 LED

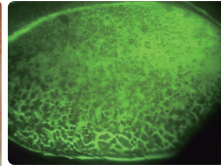
SLIT LAMP



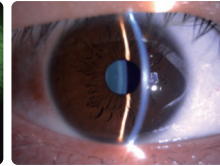
Image Samples



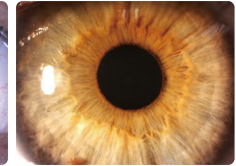
Amber filter



Blue Free Filter System²



Anterior



Iris

Specifications

SL D4 LED		
Microscope	Magnification Selection	Drum, 5-step magnification
	Eyepiece	12.5x
	Magnification Ratio (Field of View)	6x (Φ35.1mm), 10x (Φ22.5mm), 16x (Φ14.1mm), 25x (Φ8.8mm), 40x (Φ8.8mm)
Slit Illumination	Slit Width	Continuous from 14mm to 0mm (at 14mm, slit becomes a circle)
	Slit Length	Continuous from 14mm to 1mm (at 14mm, slit becomes a circle)
	Slit Angle	0 to 180 degree with horizontal scanning capability
	Filters	Blue, Red-Free, Amber, UV Cut (Normal Use), IR Cut (Normal Use)
Base	Longitudinal Movement	90mm
	Lateral Movement	100mm
	Fine Base Movement	12mm
	Vertical Movement	30mm
Power	Input (Primary)	100 - 240V AC
	Frequency	50/60Hz
	Power Consumption	110VA
Chinrest	Vertical Movement	80mm
	Fixation Target ¹	Red-LED
Dimensions/ Weight	w/ Table	550mm(W) x 399mm(D) x 558mm(H) / 17kg
	w/ Unit Table	440mm(W) x 379mm(D) x 558mm(H) / 16kg
	without Tabletop	329mm(W) x 375mm(D) x 450mm(H) / 11kg
	w/o Table and Chinrest	329mm(W) x 331mm(D) x 426 to 456mm(H) / 9.5kg
DC-4¹		
System	Beam flux division by beam splitter	
Beam splitter	Operator side: 50%; Camera side: 50%	
Focus distance	35.7mm	
Image pickup device	1/2.5 type CMOS; Effective pixel number: 5.04 million pixels	
Power input	DC12V 2.4W	
Dimensions	76mm(W)×163mm(D)×304mm(H)	
Weight	430g	

*1 Optional accessory

*2 Blue Free Filter System stands for the combination of the optional accessory YELLOW FILTER UNIT and the blue filter built-in SL-D4 (Type:LED)

PRODUCT NAME: SLIT LAMP SL-D4 (Type:LED)

Not available for sale in all countries. Please check with your local distributor for availability in your country. Not for sale in the US.

IMPORTANT Subject to change in design and/or specifications without advanced notice. In order to obtain the best results with this instrument, please be sure to review all user instructions prior to operation.



TOPCON MEDICAL SYSTEMS, INC.
101 Bauer Drive, Oakland, NJ 07436, U.S.A.
Phone: +1-201-599-5100 Fax: +1-201-599-5250 www.topconmedical.com

TOPCON HEALTHCARE SOLUTIONS, INC.
101 Bauer Drive, Oakland, NJ 07436, U.S.A.
Phone: +1-201-599-5100 Fax: +1-201-599-5250 www.topconhealth.com

TOPCON CANADA INC.
100 Provencher Avenue, Boisbriand, QC J7G 8N1 CANADA
Phone: +1-450-430-7771 Fax: +1-450-430-6457 www.topcon.ca

TOPCON SINGAPORE MEDICAL PTE. LTD.
1 JALAN KELANG TIMOR #09-01 PACIFIC TECH CENTRE SINGAPORE 59303
Phone: +65-68720606 Fax: +65-67736150
E-mail: medical_sales@topcon.com.sg www.topcon.com.sg

REPRESENTATIVE OFFICE IN INDONESIA
Level 38, Tower A, Kota Kasablanka unit G4-G4, Jl. Casablanca, Kay 88, Jakarta, Indonesia 12870
Phone: +62-21-2963-8004

TOPCON INSTRUMENTS (MALAYSIA) SDN.BHD.
No. 01, (Ground Floor), Jalan Excella 2, Off Jalan Ampang Putra,
Taman Ampang Hillz, 55100 Kuala Lumpur, MALAYSIA
Phone: +60-(0)3-42709866 Fax: +60-(0)3-42709766

TOPCON INSTRUMENTS (THAILAND) CO.,LTD.
77/162 Sinsathorn Tower, 37th Floor, Krungthongburi Rd., Klongtoey,
Klongsarn, Bangkok 10600, THAILAND
Phone: +66-(0)2-440-1152-7 Fax: +66-(0)2-440-1158

MEHRA EYETECH PRIVATE LIMITED
801 B Wing, Lotus Corporate Park, Graham Firth Steel Compound Goreang (East)
Mumbai 400063 Maharashtra, INDIA
Phone: +91-22-61285455 www.mehraeyetech.in

TOPCON HEALTHCARE SOLUTIONS AP
8 Cross Street, #18-01 Manulife Tower, SINGAPORE 048424

TOPCON (BEIJING) MEDICAL TECHNOLOGY CO., LTD.
Room 2808, Tower C, JinChangAn Building, No.82, Middle Section of East 4th Ring Road,
Chaoyang District, Beijing 100124, P.R. CHINA
+86-10-8794-5176

TOPCON EUROPE MEDICAL B.V.
Essebaan 11; 2906 LJ Capelle a/d IJssel; P.O.Box 145;
2900 AC Capelle a/d IJssel; THE NETHERLANDS
Phone: +31-(0)10-4585077 Fax: +31-(0)10-4585045
E-mail: medical@topcon.eu; www.topcon-medical.eu

ITALY OFFICE
Viale dell' Industria 60; 20037 Paderno Dugnano; (Milano), ITALY
Phone: +39-02-9186671 Fax: +39-02-91081091 E-mail: info@topcon.it; www.topcon.it

DANMARK OFFICE
Præstemarkvej 25; 4000 Roskilde; DANMARK
Phone: +45-46-327500 Fax: +45-46-327555
E-mail: topcon@topcondanmark.dk www.topcondanmark.dk

IRELAND OFFICE
Unit 276, Blanchardstown, Corporate Park 2 Ballycoolin Dublin 15, IRELAND
Phone: +353-18975900 Fax: +353-18293915 E-mail: medical@topcon.ie; www.topcon.ie

TOPCON FRANCE MEDICAL S.A.S.
1 rue des Vergers, 69760 Limonest, FRANCE
Phone: +33 (0) 437581940 E-mail: topcon@topcon.fr; www.topcon.fr

TOPCON DEUTSCHLAND MEDICAL G.m.b.H.
Hanns-Martin-Schleyer Strasse 4L; D-47877 Willich, GERMANY
Phone: +49-(0)2154-8850 Fax: +49-(0)2154-885177 E-mail: med@topcon.de; www.topcon.de

TOPCON SCANDINAVIA A.B.
Neorgatan 2; P.O.Box 25; 43151 Mölndal; SWEDEN
Phone: +46-(0)31-7109200 Fax: +46-(0)31-7109249 E-mail: medical@topcon.se; www.topcon.se

TOPCON ESPAÑA S.A.
HEAD OFFICE: Frederic Mompou 4 Esc. A Bajos 3, 08960 Sant Just Desvern Barcelona, SPAIN
Phone: +34-93-4734057 Fax: +34-93-4733932 E-mail: medica@topcon.es; www.topcon.es

TOPCON (GREAT BRITAIN) MEDICAL LTD.
Topcon House, Kennet Side, Bone Lane, Newbury, RG14 5PX U.K.
Phone: +44-1635-551120 Fax: +44-1635-551170 E-mail: medical@topcon.co.uk; www.topcon.co.uk

TOPCON POLSKA Sp. z o.o.
ul. Warszawska 23; 42-470 Siewierz, POLAND
Phone: +48-(0)32-6705045 Fax: +48-(0)32-6715405 www.topcon-polska.pl

TOPCON HEALTHCARE SOLUTIONS EMEA
Mäkelinmaku 42; 00100 Oulu, FINLAND
Phone: +358-20-754-8100 www.topconhealth.com

