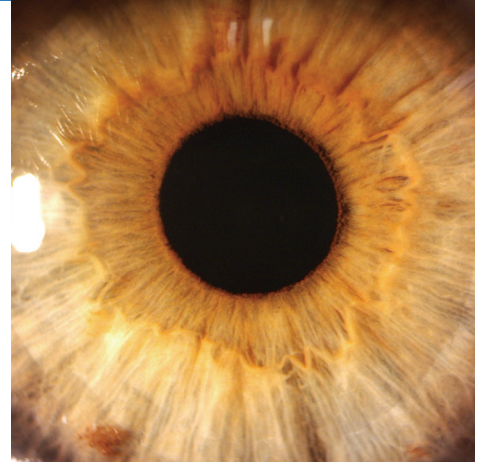


Topcon Slit Lamp Series



- » Quality
- » Precision
- » Durability

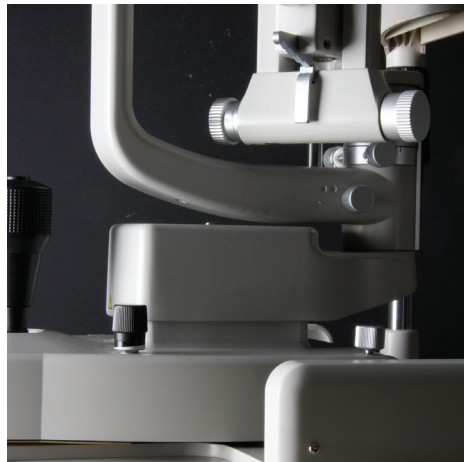
Quality. Precision. Durability.

The Topcon family of slit lamps include a wide variety of models including traditional clinical instruments and Digital Ready units. Topcon Slit Lamps combine high optical performance with time proven precision and, in selected models, digital capability. The concept of Digital Ready is based on the streamlined adaptability of all the models of the D series to accept the Topcon Digital Photo Attachments.



Quality

With more than 80 years of experience in lens manufacturing, Topcon produces all the optics to outfit its instruments, providing uncompromised quality and optical excellence.



Precision

Topcon Slit Lamps are ergonomically designed with the eye care professional and the patient in mind.



Durability

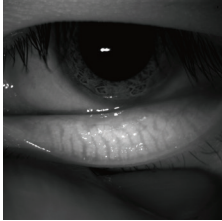
High quality materials, precision craftsmanship and customized optics confer a long and trouble free life to all Topcon Slit Lamps.

DC-4 Digital Photo Attachment (Optional Accessory)

The DC-4 Digital Photo Attachment can be easily mounted on any of the "D" series of Topcon Slit Lamps converting them into a high quality ophthalmic documentation instrument. The infra-red capabilities of the device allows viewing and documenting the condition of the Meibomian glands.



Features



Meibomian Gland Observation

Meibomian gland observation can be performed and documented using the optional illumination systems in selected models.¹ Because of the high resolution of the DC-4, fine detail and subtle changes of the Meibomian glands can be seen and photographed for a better understanding of their condition.

1. Meibomian gland observation and photographing is possible when using the BG-5 or BG-4M illuminators in conjunction with the DC-4 photo attachment in the SL-D701, SL-D7 and SL-D8Z models.

Smart Capture Function

With a simple push of the joystick trigger, the operator can obtain a rapid series of images that are quickly saved for later revision and selection. The Smart Capture function minimizes failed images or blurry pictures, especially in children and non-cooperative patients.



Video Capability

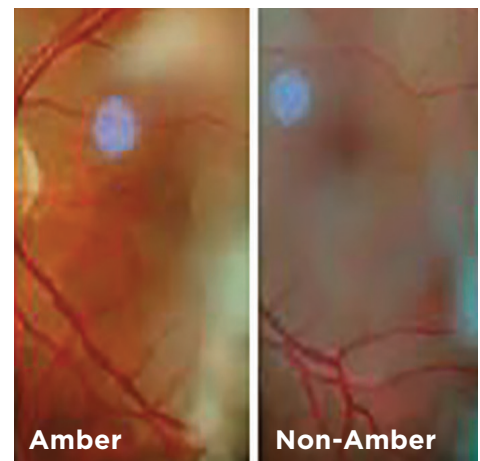
The DC-4 allows for easy acquisition of video clips of eye movements without interfering with the examination.

Live View

When using the EZ Capture software in conjunction with the DC-4, a real time live image will be seen on the monitor to facilitate centering and focusing. The live image can be used to show the eye condition to third party individuals for teaching and education. Sensitivity, shutter speed and white balance can be adjusted from the computer.

Still Image with Auto Exposure Function

By adjusting the shutter speed and sensor gain, the brightness of the image will be automatically compensated. As a result, the live image used for alignment and the final picture will have the same color.



Amber Filter

A warmer, more pleasant tone of the skin and eye structures can be obtained by inserting the amber filter. This color correction filter comes standard in all of the D series slit lamps and produces a balanced coloration that is especially useful in slit lamp imaging.

Traditional Clinical Slit Lamps



SL-2G with LED illumination

An affordable and environmentally friendly instrument for all eye care professionals, the SL-2G incorporates the latest concept in LED illumination with a light source that lasts 100 times longer than the conventional halogen bulbs. Manufactured with high quality, long lasting materials, the SL-2G features the three preferred magnifications: 10x; 16x and 25x plus all the refinements expected from Topcon's tradition of quality: Superlative optics; Precision mechanism; Smooth movement; Modern design.

- » Galilean/converging optics
- » 3 magnification drum changer for quick selection of 10x, 16x and 25x
- » Omni directional Joystick
- » Adjustable LED illumination level by rheostat
- » Built in Cobalt blue and Red-free filters
- » 14mm slit width and height
- » Accepts models 900 and 870 applanation tonometers with optional mount

Optional Accessories

- » External Fixation Light
- » Hruby filter
- » Yellow filter unit



SL-3G

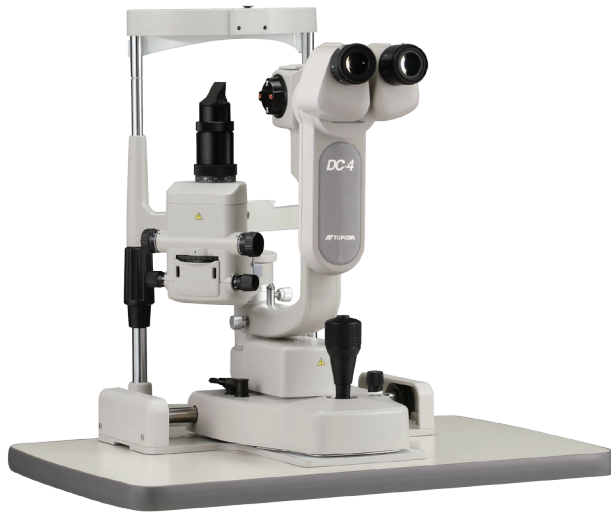
The SL-3G stereoscopic converging microscope with the use of innovative optics, provides clear images and excellent sharpness. The converging microscope reduces fatigue while providing an ample field of view. Magnifications can easily and smoothly be selected between 10x to 16x using the conveniently located lever. Final magnification ratios are equivalent to 10x and 16x with the 10x eyepieces and 16x to 25x with the included 16x eyepieces. The SL-3G features halogen illumination and an Omni-directional joystick for precise and fatigue free positioning of the instrument.

- » Greenough type converging optics
- » Halogen illumination
- » Objective rotation 2-step magnification
- » Omni directional Joystick
- » Adjustable Halogen illumination level by three position switch
- » Built in Cobalt blue, Red-free, Heat absorbent and ND 13% filters
- » 9mm slit height
- » Accepts models 900 and 870 applanation tonometers with standard mount

Optional Accessories

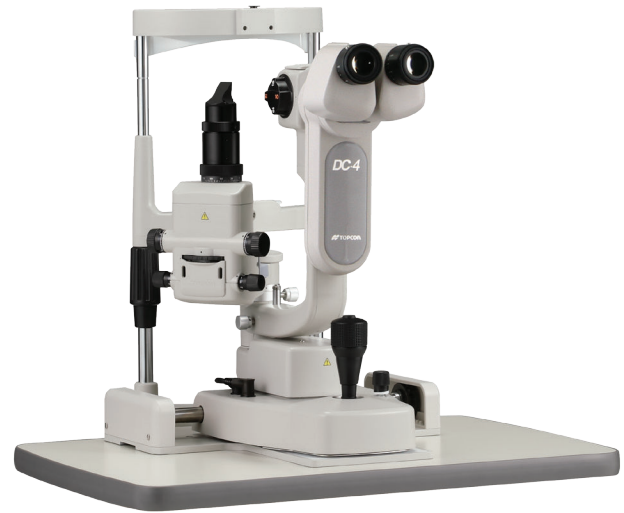
- » Hruby lens
- » 10x measuring eyepiece

The D Series Lineup: SL-D2 and SL-D4



SL-D2 Shown with optional DC-4 Digital Camera attachment. A cost effective instrument that doesn't compromise on features and delivery.

- » Convergent / Parallel optics for comfortable view
- » 3 magnification drum changer for quick selection of 10x, 16x and 25x
- » Omni directional Joystick
- » Adjustable halogen illumination level by rheostat
- » Exclusive Amber Filter for color and tone enhancement
- » Built in Cobalt blue and Red-free filters
- » 14mm slit width and height
- » Digital Ready with joystick activated capture for DC-4 Camera Attachment
- » Accepts models 900 and 870 applanation tonometers with optional mount



SL-D4 Shown with optional DC-4 Digital Camera attachment. A Slit Lamp with an expanded magnification range covering all aspects of the eye examination.

- » Convergent / Parallel optics
- » Parallel drum magnification changer with 6x, 10x, 16x, 25x and 40x. The 40x magnification level is especially useful in corneal endothelial observation.
- » Exclusive Amber Filter for color and tone enhancement
- » Cobalt blue and Red-free filters
- » Continuous Rheostat-Controlled halogen illumination at the user's fingertips
- » 14mm slit width and height
- » Digital Ready for DC-4 Camera Attachment with joystick activated capture
- » Accepts models 900 and 870 applanation tonometers with optional mount

SL-D7 and SL-D701 with LED



SL-D7 Shown with optional DC-4 Digital Camera attachment. For those preferring a tower configuration with halogen illumination and a wide array of features, the SL-D7 is the instrument of choice.

- » Converging / Parallel Optics
- » 5-magnification drum changer: 6x, 10x, 16x, 25x and 40x, (useful in endothelium cell observation)
- » 20° Slit Beam tilt for gonioscopy observation
- » Slit decentration capability
- » Versatile slit adjustment, continuous or pre-set up to 14mm of width and height
- » 5 built in filters: Amber, Cobalt Blue, Red-free, 13% Neutral Density and Heat Absorbent
- » Rotating slit angle from 0 to 180 degrees with horizontal scanning capability
- » Tonometer mount included for R900 model
- » Digital Ready, accepting the DC-4 Camera Attachment



SL-D701 with LED Illumination

Shown with optional DC-4 Digital Camera attachment. The new LED illumination source of the SL-D701 allows observation under a brighter, more homogeneous condition than the conventional halogen bulb source. The short wavelength of the LED spectrum lets the operator see minute details such as flare in the anterior chamber and vitreous. Color temperature remains uniform when adjusting light intensity ensuring consistent viewing results throughout the entire eye's optical path.

- » Converging / Parallel Optics
- » 5-magnification drum changer: 6x, 10x, 16x, 25x and 40x
- » 20° Slit Beam tilt for gonioscopy observation
- » Slit decentration capability
- » Versatile slit adjustment, continuous or pre-set up to 14mm of width and height
- » 5 built in filters: Amber, Cobalt Blue, Red-free and 13% Neutral Density
- » Rotating slit angle from 0 to 180 degrees with horizontal scanning capability
- » Tonometer mount included for R900 model

SL-D8Z



SL-D8Z Shown with optional DC-4 Digital Camera attachment. Enhanced versatility and ease of use in a tower model with halogen illumination and continuous zoom magnification. Includes a variety of features and can be combined with optional accessories.

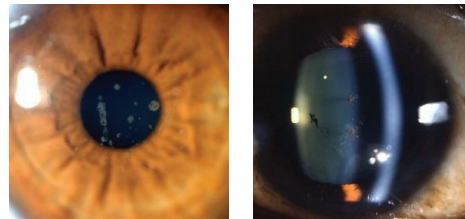
- » Continuous zoom magnification from 6x to 32x with click stops at 10x, 16x and 25x
- » Converging / Parallel Optics
- » 20° Slit Beam tilt for gonioscopy observation
- » Slit decentration capability
- » Versatile slit adjustment, continuous or pre-set up to 14mm of width and height
- » 5 built in filters: Amber, Cobalt Blue, Red-free, 13% Neutral Density and Heat Absorbent
- » Rotating slit angle from 0 to 180 degrees with horizontal scanning capability
- » Tonometer mount included for R900 model
- » Digital Ready, accepting the DC-4 Camera Attachment

Options

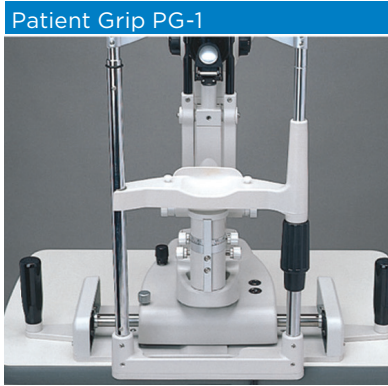


IMAGeNet Systems (Optional Accessory)

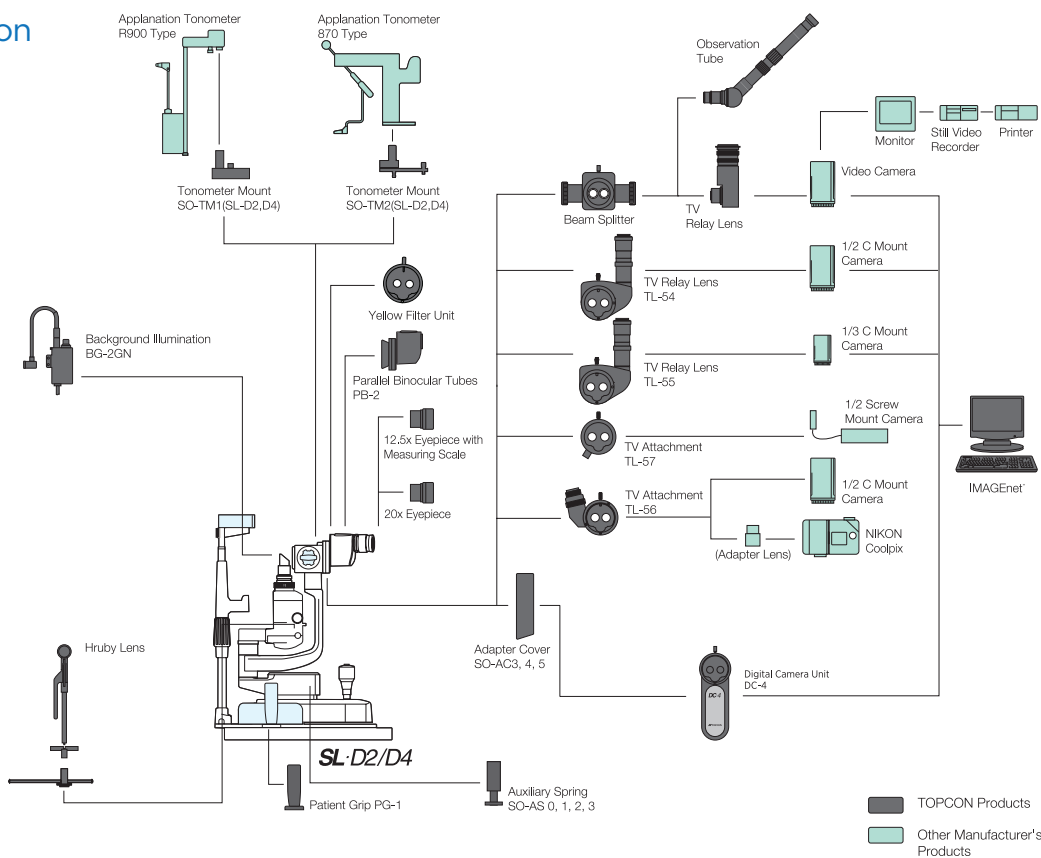
All Topcon SL "D" Series Slit Lamps, when used in conjunction with the DC-4 Digital Photo Attachment, can transfer images to IMAGeNet for versatile diagnostic processing and interpretation. IMAGeNet is a full function digital imaging system for faster, more efficient acquisition, storage retrieval and analysis of all types of ophthalmic images. The images captured can be used in research, education and clinical applications.



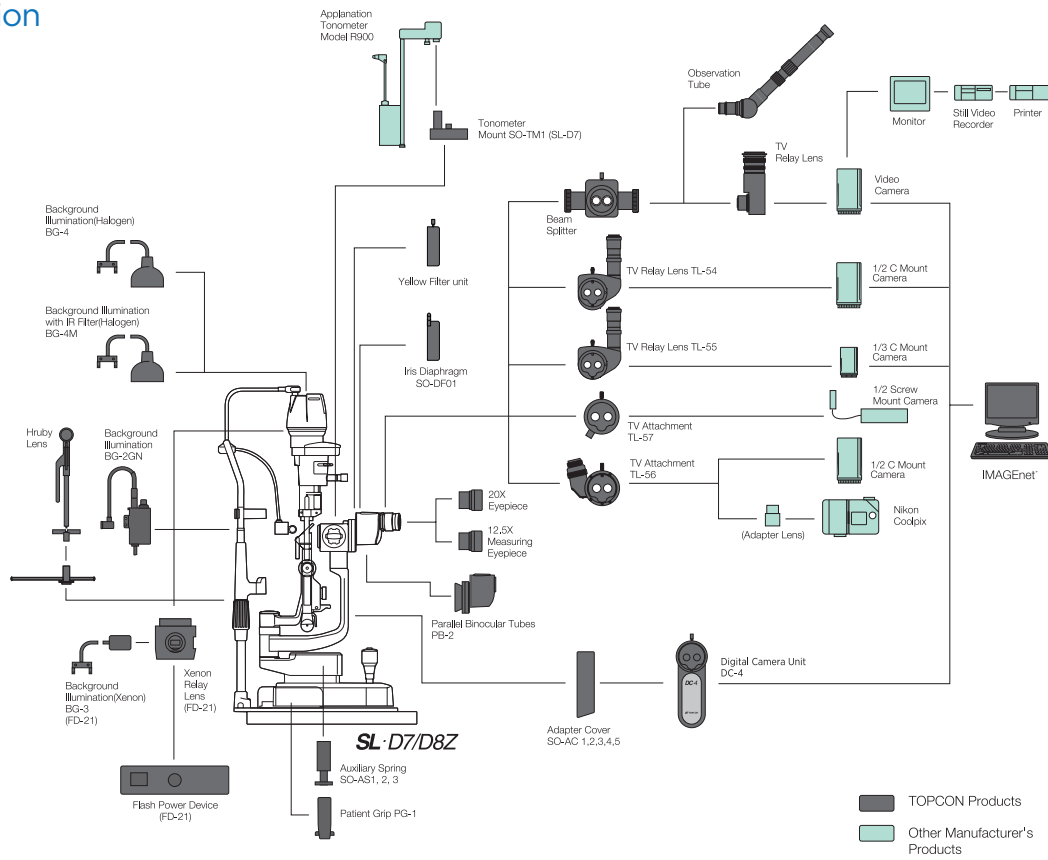
Accessories for D-Series



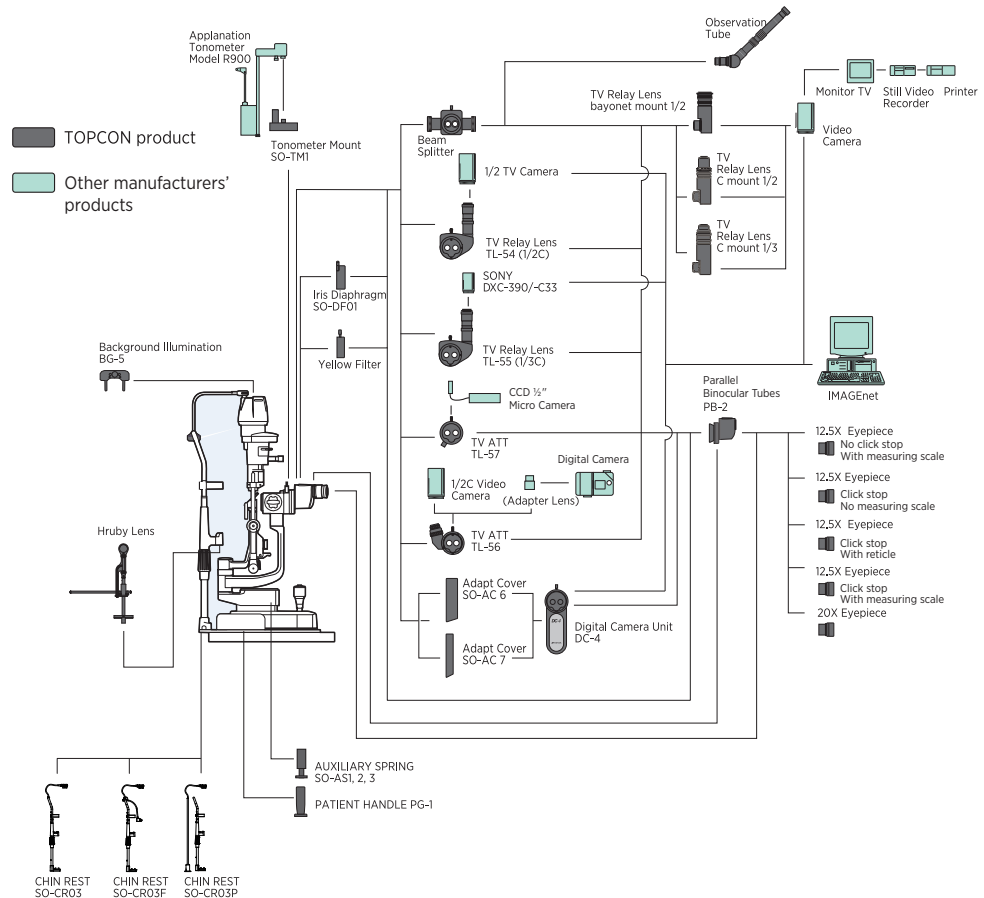
System Configuration SL-D2 and SL-D4



System Configuration SL-D7 and SL-D8Z



System Configuration SL-D701



Specifications SL-2G

MICROSCOPE

Type	Galileo convergence
Magnification selection	3 steps by rotation drum
Magnification	10x, 16x, 25x
Eyeiece	12.5x
Diopter adjustment	-5D - +3D
Total magnification (field of view)	10x (Ø 22.5mm) 15.98x (Ø 14.1mm) 25.53x (Ø 8.8mm)

ILLUMINATION

Slit width	Continuous from 0 to 14mm
Slit length	Continuous from 1 to 14mm
Aperture	Continuous from 1 to 14mm, Ø 0.3, 1, 5, 10, 14mm
Slit angle	0° to 180°
Filters	Blue, Red free
Illumination lamp	LED

POWER

Power consumption	40VA
Input (Primary)	AC 100 - 240 V 50 - 60Hz

DIMENSIONS AND WEIGHT

Standard (with table top and chinrest)	550mm(W) x 399mm(D) x 520mm(H) 15.2Kg
--	---------------------------------------

SL-3G

MICROSCOPE

Type	Stereoscopic Microscope		
Magnification selection	2 steps by objective lens rotation		
Magnification	1x, 6x		
Eyeiece	10X, 16X (16X Eyepiece is optionally available in some regions)		
Diopter adjustment	-5D - +3D		
Magnification ratio	Objective	Eyepiece	Magnification (Field of View)
	1X	10X	10x (18mm dia.)
		16X	16X (14.5mm dia.)
	1.6X	10X	16x (11.25mm dia.)
		16X	25.6X (9mm dia.)
Pupillary adjustment		10X eyepiece	55mm - 82mm
			51mm - 78mm
Diopter adjustment		10X eyepiece	+/- 8D
		16X eyepiece	+/- 10D

SLIT ILLUMINATION

Slit width	Continuous from 0 to 9mm (Circle at 9mm)
Slit length	Continuous from 1 to 8mm
Aperture diameter	9, 8, 5, 3, 2, 1, 0.2mm
Slit angle	0° to 180°
Slit inclination	5°, 10°, 15°, 20°
Filters	Cobalt blue, Red-free, 13% ND, Heat absorbing, UV Cut (Normal use), IR Cut (Normal use)
Illumination lamp	6V 20W Halogen

BASE

Longitudinal movement	90mm
Lateral movement	100mm
Fine base movement	15mm
Vertical movement	30mm

CHINREST

Vertical movement	80mm
Fixation target	6V 0.2A Tangsten lamp

POWER

Input (Primary)	AC 120V/220V/230V/240V
Frequency	50 - 60Hz
Power Consumption	30VA

DIMENSIONS & WEIGHT

Table type	550mm(W) x 430mm(D) x 770 - 800mm(H), 21KG
Unit type	440mm(W) x 410mm(D) x 770 - 800mm(H), 20KG

Specifications

SL-D701

MICROSCOPE			
Type	Galileo type		
Magnification	Drum, 5-step magnification		
Magnification selection	6/10/16/25/40		
Overall magnification (actual vision field)	6.37 (ø 35.1mm), 9.94 (ø 22.5mm), 15.87 (ø 14.1mm), 25.37 (ø 8.8mm), 39.62 (ø 5.6mm)		
Illumination lamp	Magnification	12.5x	
	Diopter adjustment range	-5D ~ +5D	
Binocular tubes	PD adjustment: 55 to 78mm		
ILLUMINATION			
Illumination field	Slit width	0 to 14mm, can be altered gradually (14mm=circle)	
	Slit length	14 to 1mm, can be altered gradually (14mm=circle)	
	Aperture diameter	ø 14, 10, 5, 2, 1, 0.2mm	
Slit direction	Vertical to horizontal can be altered gradually Inclination: 5° / 10° / 15° / 20° Side swing		
Filters	Blue filter, red-free filter, amber filter, UF cut filter (normal use), IR cut filter (normal use), ND Filter (13% transmission), exciter filter for slit lamp*, barrier filter for slit lamp*		
Illumination lamp	LED type	3A, 10W	
BASE			
Forward-backward movement	90mm		
Right-left movement	100mm		
Vertical movement	30mm		
Amount of movement in all directions	12mm		
CHINREST			
Amount of vertical movement	80mm		
Fixation target	Fixation target with diopter adjustment, Luminous fixation target		
Fixation lamp	LED (Red)		
OTHER SPECIFICATIONS			
Input (Primary)	w/Table	550mm(W) x 420mm(D) x 752 to 782mm(H)	
	w/Unit Table	440mm(W) x 397mm(D) x 752 to 782mm(H)	
	w/o Table	329mm(W) x 396mm(D) x 652 to 682mm(H)	
	w/o Table and Chinrest	550mm(W) x 332(304)mm(D) x 652 to 682mm(H)	
	Weight	w/Table	19kg
		w/Unit Table	18kg
		w/o Table	13kg
		w/o Table and Chinrest	11.5kg
	Table size	550mm x 370mm	
Unit Table size	440mm x 350mm		
Height from top to patients eye	375mm		
Power Supply	100-200V AC, 50-60Hz, 110VA		

SL-D2,
SL-D4,
SL-D7,
SL-D8Z

MICROSCOPE	SL-D2	SL-D4	SL-D7	SL-D8Z
Type	Galilean magnification changer with converging binocular tubes			
Magnification Selection	3 steps by drum rotation	5 steps by drum rotation		Variable via continuous zoom (click 10X, 16X, 25X)
EYEPIECE	12.5x			
Magnification Ratio (Field of View)	10x (22.5 mm), 16x (14.1 mm) 25x (8.8 mm)	6x (35.1 mm), 10x (22.5 mm), 16x (14.1 mm) 25x (8.8 mm), 40x (5.6 mm)		Continuous from 6X - 32X (35.2 mm - 7 mm)
SLIT ILLUMINATION				
Slit Width	Continuous from 14 mm to 0 mm (at 14 mm, slit becomes a circle)			
Slit Length	Continuous from 14 mm to 0 mm (at 14 mm, slit becomes a circle)			
Slit Angle	0 to 180 degrees with horizontal scanning capability			
Filters	Blue, Red-Free, Amber UV Cut (Normal Use), IR Cut (Normal Use)		Blue, Red-Free, Amber UV Cut (Normal Use), IR Cut (Normal Use), ND (13% Transmission), Heat Insulation Exciter/Barrier (Factory Option)	
Illumination Lamp	6V, 20W halogen lamp		12V, 30W halogen lamp	
BASE				
Longitudinal Movement	90 mm			
Lateral Movement	100 mm			
Fine Base Movement	15 mm			
Vertical Movement	30 mm			
CHINREST				
Vertical Movement	80 mm			
Fixation Target	Red-LED		Red-LED or White-Bulb	
POWER				
Input (Primary)	100-120V, 220-240V, AC			
Frequency	50/60 Hz			
Power Consumption	160VA			
DIMENSIONS				
with Table	550 mm x 399 mm x 558 mm		550 mm x 399 mm x 760-790 mm	
with Unit Table	440 mm x 379 mm x 558 mm		440 mm x 399 mm x 760-790 mm	
without Table and Chinrest	329 mm x 306 mm x 415-445 mm		329 mm x 306 mm x 652-682 mm	
WEIGHT				
with Table	17 kg		19 kg	19.5 kg
with Unit Table	16 kg		18 kg	18.5 kg
without Table and Chinrest	9.6 kg		11.5 kg	12 kg