

Specifications

Microscope Unit	
Type	Galilean type
Magnification	Drum, 3-step magnification
Magnification steps	10/16/25
Overall magnification	10.00 (φ 22.5mm) 15.98 (φ 14.1mm) 25.53 (φ 8.8mm)
Eyepiece lens	Magnification: 12.5x Diopter adjustment range: -5D to +5D
PD adjustment range	55 to 78mm
Illumination Unit	
Illumination field	Slit width: 0 to 9mm, can be altered gradually (9mm=circle) Slit length: 1 to 8mm, can be altered gradually
Aperture diameter	φ 9, 8, 5, 3, 2, 1, 0.2mm
Slit direction	Vertical to horizontal, can be altered gradually
Inclination	5°, 10°, 15°, 20° from below Available for use side swing
Filter	Blue filter, red-free filter, ND filter (13% transmission), UV cut filter (normal use), IR cut filter (normal use)
Illumination lamp	Halogen type: 6V 20W
Base Unit	
Forward-backward movement length	90mm
Right-left movement length	100mm
Vertical movement length	30mm
Fine adjustment in all directions length	12mm
Chinrest Unit	
Adjustable range of the vertical direction	80mm
Fixation target	Fixation target with diopter adjustment Light source for fixation target: LED
Other Specification	
Dimensions	w/Table 550mm(W) x 430mm(D) x 760 to 790mm(H) w/ Unit Table 440mm(W) x 410mm(D) x 760 to 790mm(H) w/o Table 312mm(W) x 296mm(D) x 646 to 676mm(H)
Weight	w/Table 17.5kg w/ Unit Table 17kg w/o Table 12kg
Power Supply	100-240V AC 50-60Hz, 80VA
DC-4 Digital Camera Unit (Option)	
System	Beam flux division by beam splitter
Beam splitter division ratio	Operator side: 50%; Camera side: 50%
Focus distance	35.7mm
Sensor type	1/2.5 type CMOS; Effective pixel number: 5.04 M pixels
Sensor Size (H x V pixels)	2590 x 1942
Dimensions	76mm(W) x 163mm(D) x 304mm(H)
Weight	430g



* Not available in all countries, please check with your distributor for availability in your country
* Subject to change in design and/or specifications without advanced notice.

IMPORTANT In order to obtain the best results with this instrument, please be sure to review all user instructions prior to operation.



TOPCON CORPORATION



TOPCON CORPORATION



TOPCON CORPORATION

TOPCON CORPORATION
75-1 Hasunuma-cho, Itabashi-ku, Tokyo 174-8580, Japan. Phone:+81-(0)3-3558-2522/2502 Fax:+81-(0)3-3965-6898 www.topcon.co.jp

TOPCON MEDICAL SYSTEMS, INC.
111 Bauer Drive, Oakland, NJ 07436, U.S.A.
Phone:+1-201-599-5100 Fax:+1-201-599-5250 www.topconmedical.com

TOPCON CANADA INC.
110 Provencher Avenue, Boisbriand, QC J7G 1N1 CANADA
Phone:+1-450-430-7771 Fax:+1-450-430-6457 www.topcon.ca

TOPCON EUROPE MEDICAL B.V.
Esebeaan 11, 2908 LJ Capelle a/d IJssel, P.O. Box 145,
2900 AC Capelle a/d IJssel, THE NETHERLANDS
Phone:+31-(0)10-4585077 Fax:+31-(0)10-4585045
E-mail: medical@topcon.eu; www.topcon-medical.eu

ITALY OFFICE
Viale dell'Industria 60, 20037 Paderno Dugnano, (Milano), ITALY
Phone:+39-02-9186671 Fax:+39-02-91081091 E-mail: info@topcon.it; www.topcon.it

DANMARK OFFICE
Praestemarksvej 25, 4000 Roskilde, DANMARK
Phone:+45-46-327500 Fax:+45-46-327555
E-mail: topcon@topcon.danmark.dk www.topcon.danmark.dk

IRELAND OFFICE
Unit 276, Blanchardstown, Corporate Park 2 Ballycoolin Dublin 15, IRELAND
Phone:+353-18975900 Fax:+353-18293915 E-mail: medical@topcon.ie; www.topcon.ie

TOPCON S.A.R.L.
BAT A1 3 route de la révolte 93206 SAINT DENIS CEDEX
Phone:+33-1-49-21-23-23 Fax: +33-1-49-21-23-24 E-mail: topcon@topcon.fr; www.topcon.fr

TOPCON DEUTSCHLAND MEDICAL G.m.b.H.
Hanns-Martin-Schleyer Strasse 41, D-47877 Willich, GERMANY
Phone:+49-(0)2154-8850 Fax:+49-(0)2154-885177 E-mail: med@topcon.de; www.topcon.de

TOPCON SCANDINAVIA A.B.
Neogatan 2, P.O. Box 25, 43151 Mölndal, SWEDEN
Phone:+46-(0)31-7109200 Fax:+46-(0)31-7109249 E-mail: medical@topcon.se; www.topcon.se

TOPCON ESPAÑA S.A.
HEAD OFFICE
Frederic Mompou 4 Esc. A Bajos 3, 08960 Sant Just Desvern Barcelona, SPAIN
Phone:+34-93-4734057 Fax:+34-93-4733932 E-mail: medica@topcon.es; www.topcon.es

TOPCON (GREAT BRITAIN) LTD.
Topcon House, Kennet Side, Bone Lane, Newbury, Berkshire RG14 5PX United Kingdom
Phone:+44-(0)1635-551120 Fax:+44-(0)1635-551170 E-mail: medical@topcon.co.uk; www.topcon.co.uk

TOPCON POLSKA Sp. z o.o.
ul. Warszawska 23, 42-470 Siewierz, POLAND
Phone:+48-(0)32-6705045 Fax:+48-(0)32-6713405 www.topcon-polska.pl

TOPCON SINGAPORE MEDICAL PTE. LTD.
1 JALAN KILANG TIMOR #09-01 PACIFIC TECH CENTRE SINGAPORE 159303
Phone:+65-68720606 Fax:+65-67739150
E-mail: medical_sales@topcon.com.sg www.topcon.com.sg

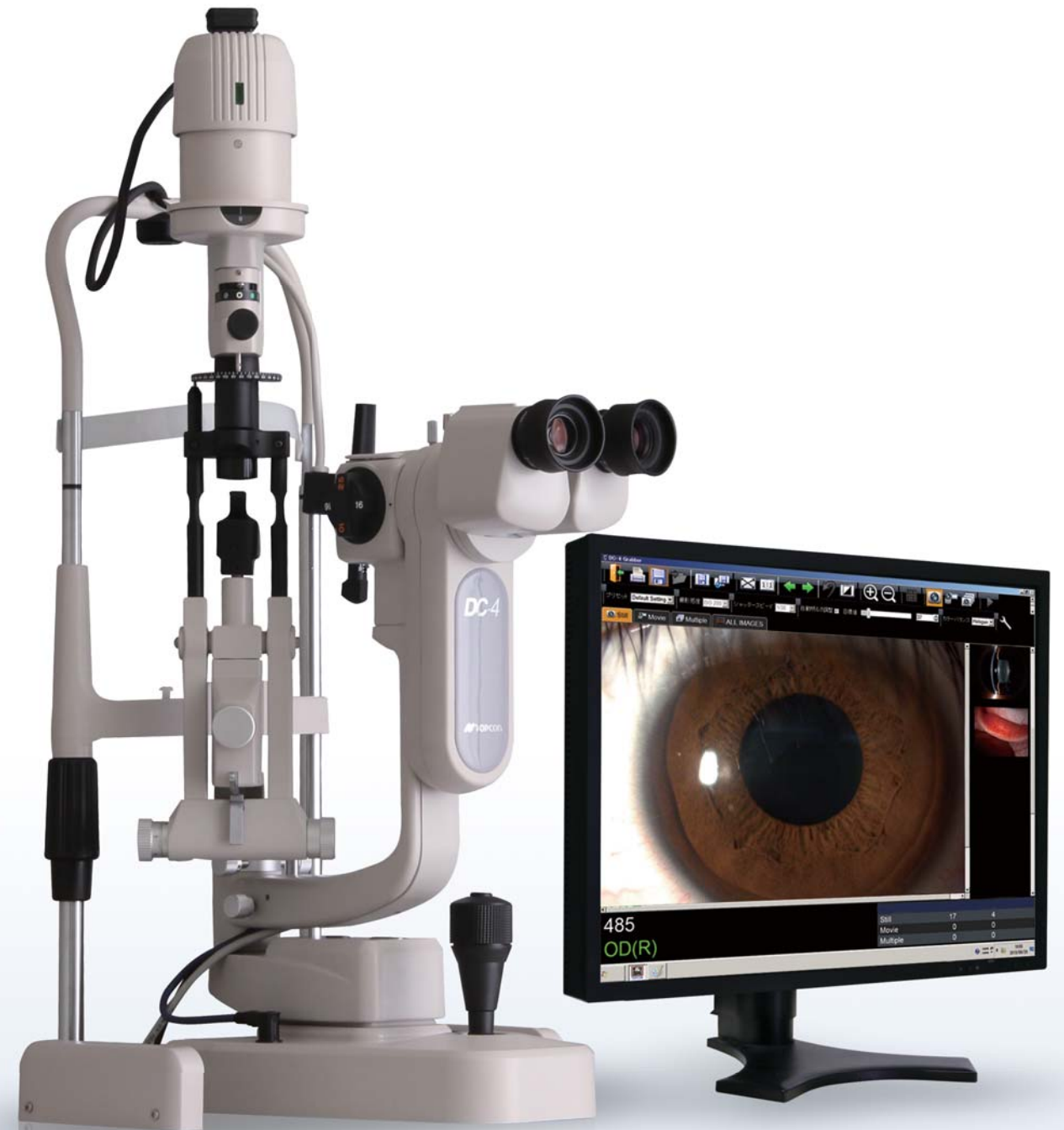
REPRESENTATIVE OFFICE IN INDONESIA
Level 38, Tower A, Kota Kasablanka unit: GH-04, Jl. Casablanca, Kav. 88, Jakarta, Indonesia 12870
Phone:+62-21-2963-8004

TOPCON INSTRUMENTS (MALAYSIA) SDN.BHD.
No. D1, (Ground Floor), Jalan Excella 2, Off Jalan Ampang Putra,
Taman Ampang Hilir, 55100 Kuala Lumpur, MALAYSIA
Phone:+60-(0)3-42709866 Fax:+60-(0)3-42709766

TOPCON INSTRUMENTS (THAILAND) CO.,LTD.
77/162 Sinnsathorn Tower, 37th Floor, Krungthornburi Rd., Klongtonnart,
Klongsarn, Bangkok 10600, THAILAND
Phone:+66(0)2-440-1152-7 Fax:+66-(0)2-440-1158

SL-D301

Slit Lamp



TOPCON



High Performance, Affordably Priced



SL-D301 Slit Lamp

Features

- » A Classic Slit Lamp ideal for all basic clinical examinations
- » Smooth movements and time proven durability
- » Reliability and value assured by Topcon's 40+ years of experience
- » Optional integrated digital camera provides simple image and video acquisition

DC-4 Digital Camera¹

» Smart capture function

With the simple push of a button on the control lever, the operator can obtain a rapid series of images that are quickly saved for later revision and selection. The Smart Capture function minimizes failed images and blurry pictures, especially in patients with excessive blinking.

» Live view

When using the EZ Capture software in conjunction with the DC-4, a real-time live image will be seen on the monitor to facilitate alignment and focus. The live image can be used to show the eye condition to third party individuals for teaching and education. Sensitivity, shutter speed and white balance can be adjusted from the computer.

» High-resolution sensor

» Superior visibility

» Video capability

The DC-4 allows for easy acquisition of eye movement video clips without interfering with the examination.

» Still Image acquisition with auto exposure function

By adjusting the shutter speed and sensor gain, there will be automatic compensation for the image brightness. As a result, the live image used for alignment and the final picture will have the same color balance.



Live View



Captured Image

Fine Images

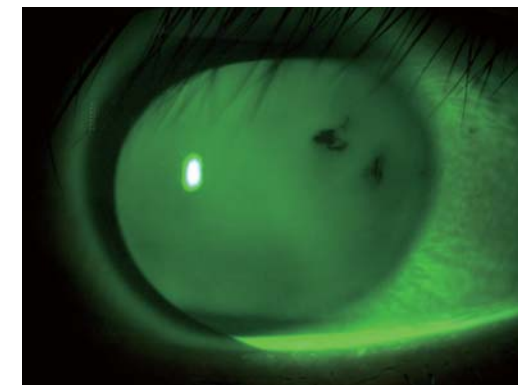
The images captured with DC-4 and displayed on the monitor provide fine images for consultation with patient or patient's family.



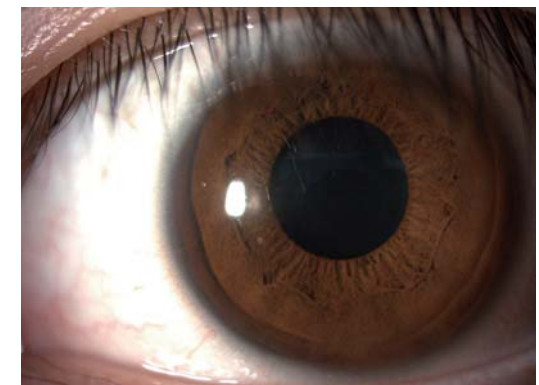
Sclera



Cornea

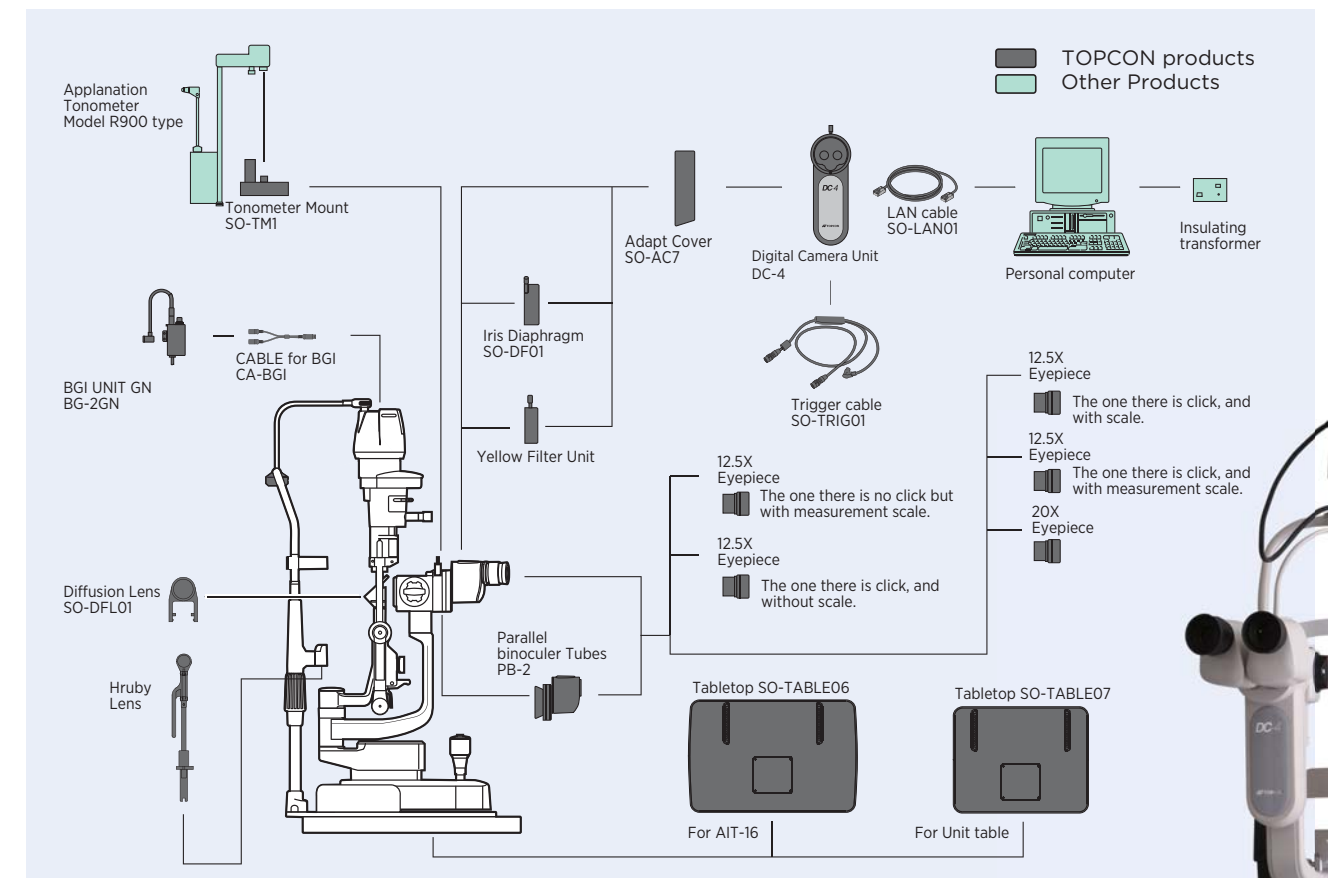


Fluorescence Observation²



Iris

System Chart



² Fluorescence observation is possible only in combination with optional yellow filter unit.

¹ DC-4 is optional